

A green freight train engine is positioned on a set of railway tracks that recede into the distance. The train is facing the viewer and has "green cargo" and "Re 1438" written on its front. The surrounding landscape consists of green fields and a clear blue sky with some wispy clouds. In the background, there are some buildings and trees.

green
cargo

Our development is driven
by customer demand

Efficient and Sustainable Railway Logistics

- Green Cargo is a logistics company principally transporting freight by rail.
- We operate freight trains in Sweden, Norway and Denmark, and via our partners we reach the rest of Europe.
- We can offer transport solutions to locations not connected to railway tracks.
- We have the experience, skills and resources.
- Our rail network is unique.

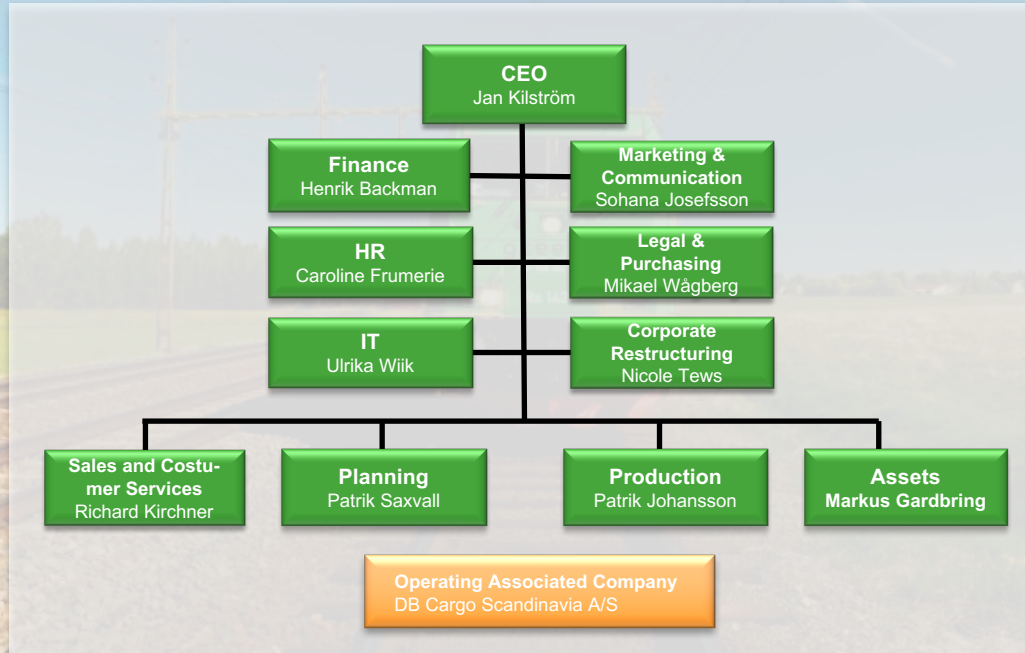
Company Facts

Turnover:	SEK 4.0 billion (2015)
Owner:	Swedish state, 100 percent
Number of employees:	Approx. 1900
Number of locomotives:	Approx. 390
Number of wagons in the system each day:	Approx. 6300
Transport work:	9.1 billion net tonne-km (2015)
Certifications:	ISO 9001, ISO 14001, OHSAS 18001
Environment:	The only nation-wide freight transport company that meets the standards set by the Swedish Society for Nature Conservation for freight transports (<i>Bra Miljöval</i>)

Our Business Concept
We develop and deliver effective and sustainable rail logistics with Scandinavia as our home market

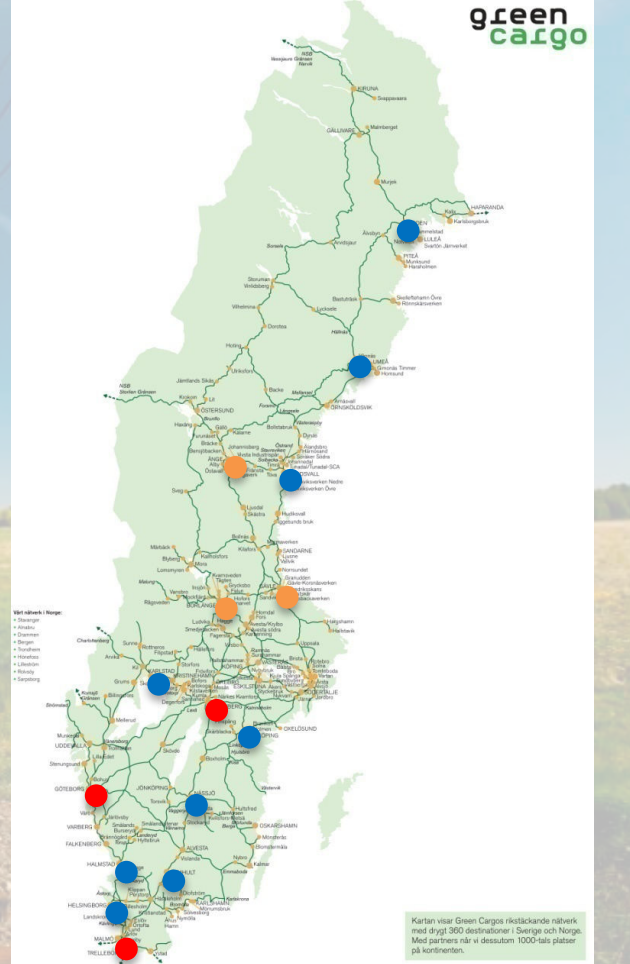


Green Cargo's Organization



Green Cargo in Sweden

- Serves approximately 270 locations in Sweden and major cities in Norway. In cooperation with other operators, we reach thousands of locations in Europe.
- Efficient use of rail yards and a large number of daily connections.
-  Three central hubs with shunting
-  Three secondary shunting yards
-  Nine local train formation facilities
- In 2015, we have increased train fill rates from 65% to 75%



Green Cargo in Norway

- In March 2016, we expanded our operation in Norway and we are currently the second largest rail operator in Norway.
- At present, we run cross-border traffic between:
 - Hallsberg – Oslo – Drammen
 - Gothenburg – Sarpsborg – Oslo
 - Boden/Kiruna – Narvik
- We offer daily connections between Alnabru, Oslo;
 - Trondheim
 - Bergen
 - Åndalsnes
 - Stavanger

green
cargo

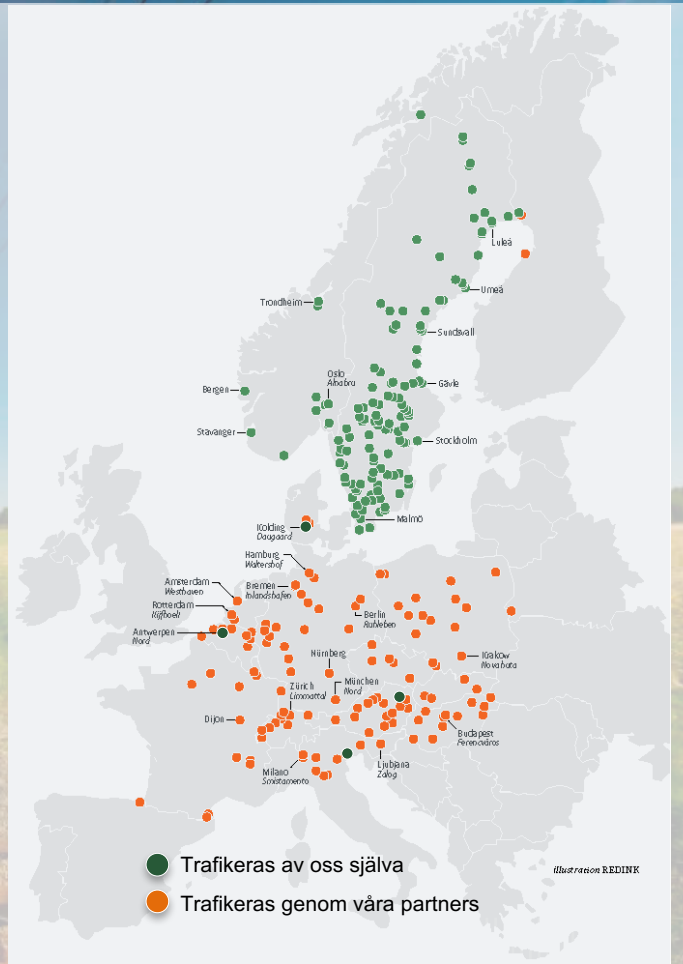


Green Cargo in Europe

Our international direct lines and connections with Europe

- **Skandviking**
Ystad – Swinoujscie – Vienna
- **Italy Direct**
Trelleborg – Rostock – Treviso
- **Belgium Direct**
Malmö – Antwerp
- **Volvo Train 8 system**
Umeå via Malmö – Gent
- International single wagonload through Xrail

green
cargo



Our Customers

A selection of our customers

AFAB, SSAB, ScandFibre Logistics, Stora Enso, Volvo, PostNord, IKEA, Boliden, Södra, SCA, Ovako, Metsä, LKAB, Maersk, CMA CGM and MacAndrews.

Green Cargo has our continued confidence resulting from a good cooperation along with cost efficiency and quality. Something that we now are further developing together is in improving our fuel consumption and making it more efficient.

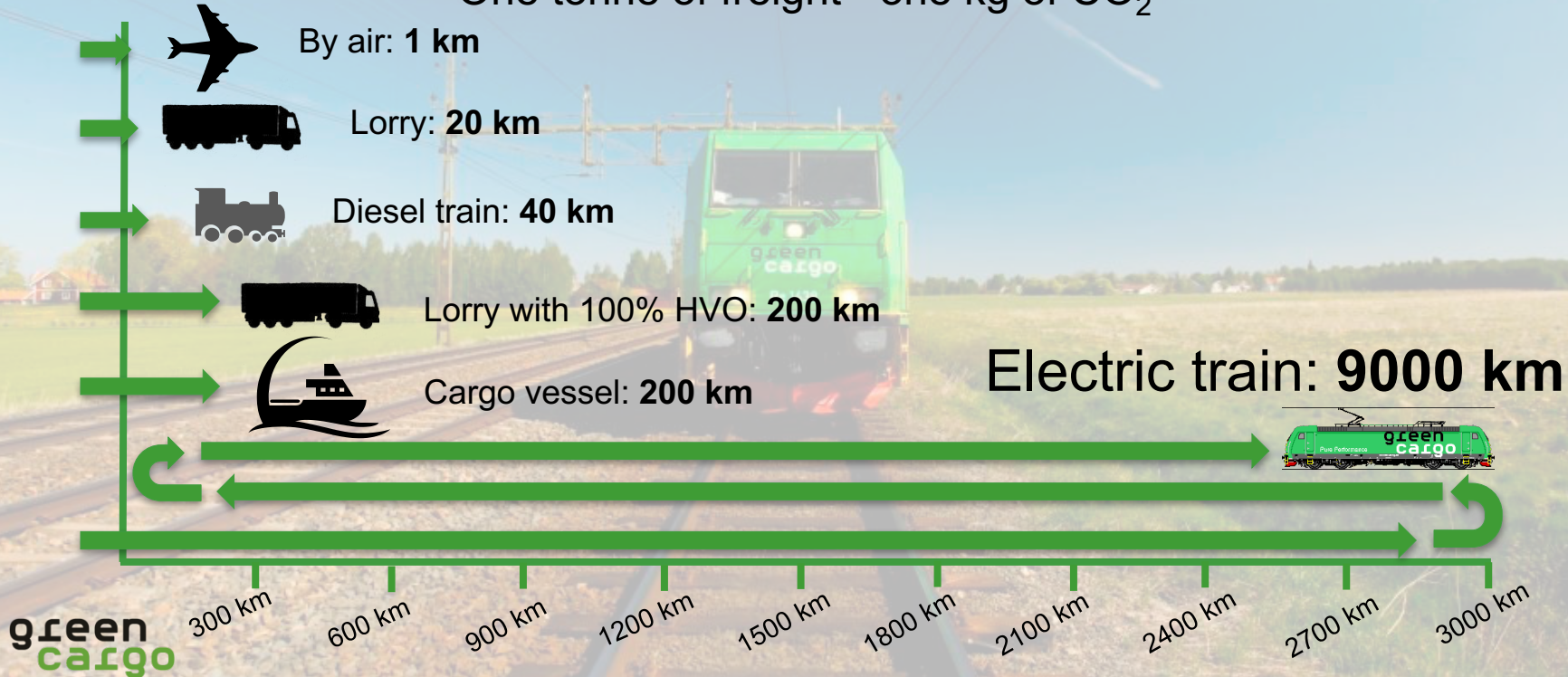
Olle Ankarling, Logistics, Söderenergi

We see major advantages in rail transport. In addition to the environmental aspects, Green Cargo's solution has made possible an efficient and highly punctual logistics chain.

Jesper Nielsen, Logistic Contracting/Transport Manager,
Nordic Sugar

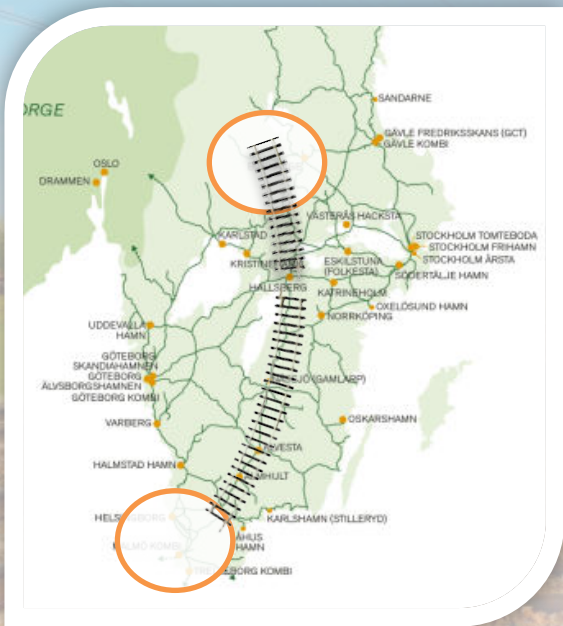
How far will the goods get?

One tonne of freight - one kg of CO₂



Truck vs. Train

Time and CO₂ comparisons



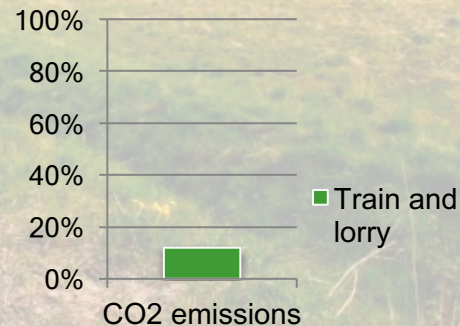
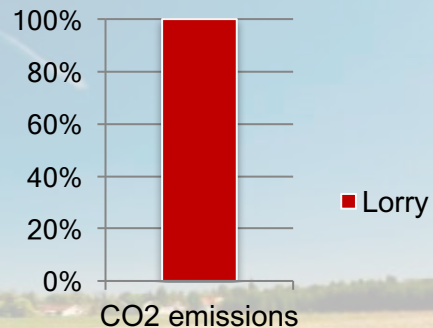
green
cargo



20 hours



25 hours



Our Products



Single Wagon Load

For businesses requiring both regular and ad hoc freight transportation.

We transport one or more wagons with fixed delivery times using established train departures for all types of freight. We are able to service places which are not connected to the railway.

Intermodal

For businesses that needs to transport standardized volumes between terminals and harbours.

Transport of standardised units between terminals and harbours according to a fixed timetable.

Block Trains

For businesses that regularly need to transport large volumes between fixed destinations.

Together, we create a unique transportation solution. Most often the volumes require an entire train.

We Take Care of the Entire Process

- **Truck and forwarding, Nordic region**
Complement our train services.
Long-distance and local transportation by truck or in combination with rail.
- **International forwarding**
For companies needing to transport freight to Europe primarily by rail.
We create a door-to-door solution based on your needs through Green Cargo NTR.

Other Services

Services for freight handling

- Transshipment and warehousing at the terminal. We unload and load containers from one mode of transport to another, known as *stuffing and stripping*. We also offer warehousing, storage and lifting of your freight.
- Other additional services in connection with transport: Shunting services, rental of cars and load carriers, transport monitoring etc.

Why Green Cargo

- **Significant Experience** - We are an experienced carrier which gives you a secure logistics partner.
- **“One stop shop”** – You do not need to put all the pieces of the transportation puzzle together yourself. We take care of the entire process for you.
- **Good quality** - We know that staying on schedule is important to you, and we are the most punctual rail freight transport company in Sweden.
- **High capacity** - We can transport large amounts of freight in total and per occasion.
- **Substantial reach** - Our network allows us to transport both within the Nordic region and to and from Europe. You only need to keep track of one transport company, no matter which countries are involved.
- **Environmentally friendly** - We offer our customers the most stringent environmental certification for its transportation work - the Swedish Society for Nature Conservation’s *Bra Miljöval* distinction.



Thank you!