



## CFL cargo s.a. - Company ID

CFL cargo

With 300 employees, a fleet of more than 70 locomotives and 3100 wagons, CFL cargo offers customer-orientated services, including international long distance rail freight transport, regional rail freight trains and local feeder services, shunting and marshalling yard operations and oversized load transportation.

### History

- 1997:** creation of EuroLux Cargo
- 2006:** creation of CFL cargo and its subsidiaries  
CFL cargo Deutschland & CFL cargo Danmark
- 2008:** CFL cargo takes over Ateliers de Pétange
- 2010:** creation of CFL Fret Services France,  
renamed CFL cargo France in 2013
- 2012:** acquisition of CFL cargo Sverige
- 2014:** reorganisation of the freight activities of the CFL group,  
closer cooperation with CFL multimodal and its subsidiaries

### Headquarters

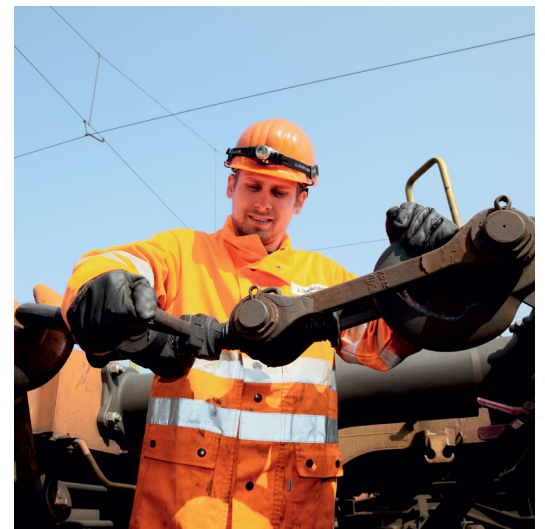
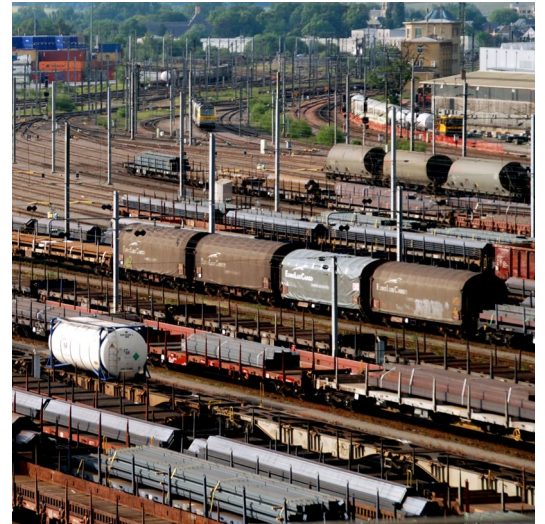
Z.I. Riedgen  
L-3451 Dudelange

### Subsidiaries

CFL cargo Danmark  
CFL cargo Deutschland  
CFL cargo France  
CFL cargo Sverige  
CFL technics

### Shareholders

66.7% CFL / 33.3% ArcelorMittal



## ECOlogistics for our future



## Board of Administrators

Marc Wengler, President  
Nico Reuter, Vice-president  
Félicie Weycker, Jeannot Waringo,  
Alex Kremer, Paul Tetteroo, Arnaud Desmonts,  
Jean-Claude Bernardini, Thierry Laux,  
Mylène Wagner-Bianchy, Jean-Claude Thümmel,  
Fraenz Benoy

## Management

Marc Polini, CEO  
Ghislain Bartholomé, COO

## Employees

336 (December 2016)

## Turnover

131 M € in 2016

## Certifications

ISO 9001  
OHSAS 18001  
AEO  
ECM  
SMS  
SQAS  
Safety certificate Part A (General),  
Part B for Luxembourg, France & Belgium-Wallonia

## VAT Number

TVA LU 172 330 26

## Bank account

BCEELULL:  
IBAN LU86 0019 1300 2377 5000

## CR Number

R.C. Luxembourg B60314

